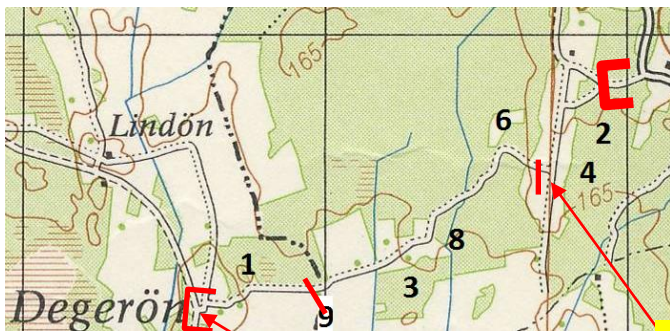


Skala 1:25 000



1,2,3 Missat

2,3 Missat

TK 6 Vsk N 2

Vsk V 4

S 6

N 8

V 8

N 3

N 9

S 1

Vsk SV 1

N Degerön

Vsk N Degerön

Ok Väg SSV Lindön

Sv Lindön

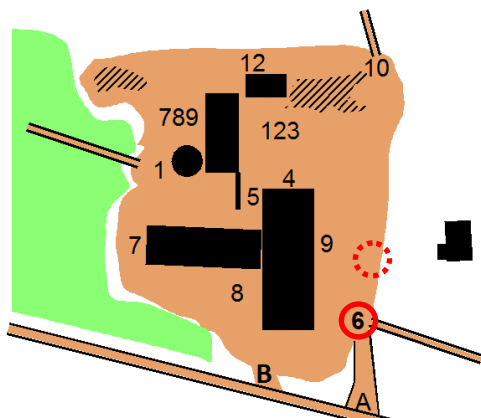
IF

IA

O

(A)N

Skala 1:2 000



Ok Gm A  
 Väg O 6

Gm 9

Gm 6

Gm A

A

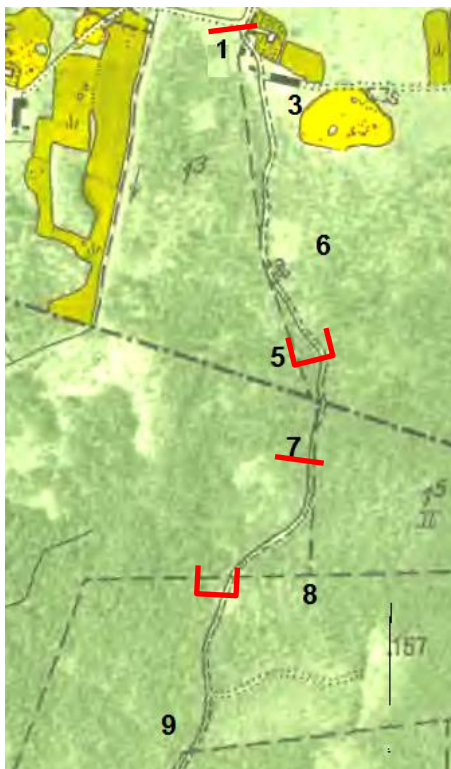
Skala 1: 25 000



N Degerön

Vsk So Degerön

Skala 1: 10 000



Vsk NNO 1

ONO 1

V 6

O 5

O 7

S 7

V 8

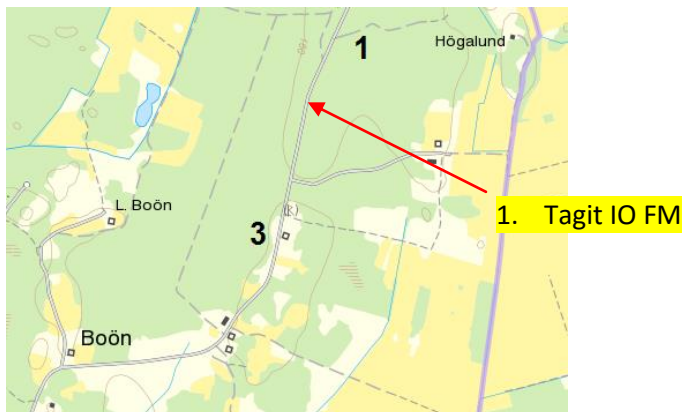
O 9

IK

S  
IE

T

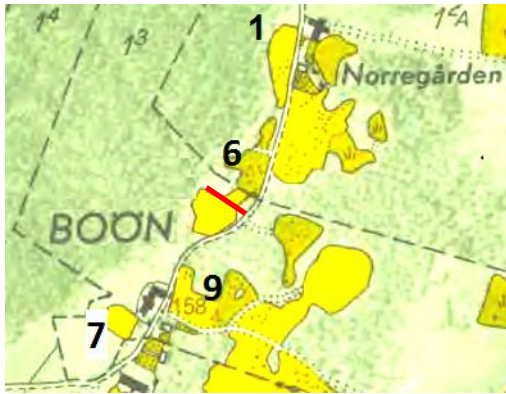
Skala 1:25 000



V 1

O 3

Skala 1:10 000



V Norregården

O 6

S 6

V 9

O 7

SV 7

IV

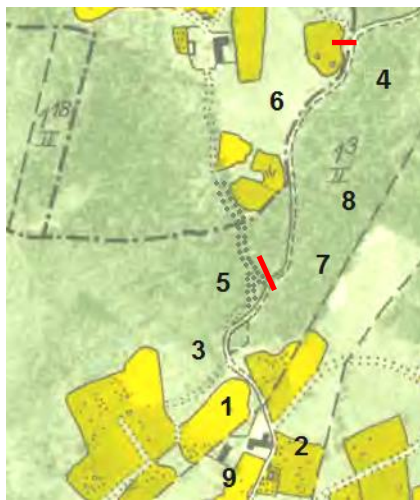
Skala 1:25 000



S Boön  
**SSV Boön**  
 OSO 152  
**V 155**  
 N Boatängen

IT  
 Z

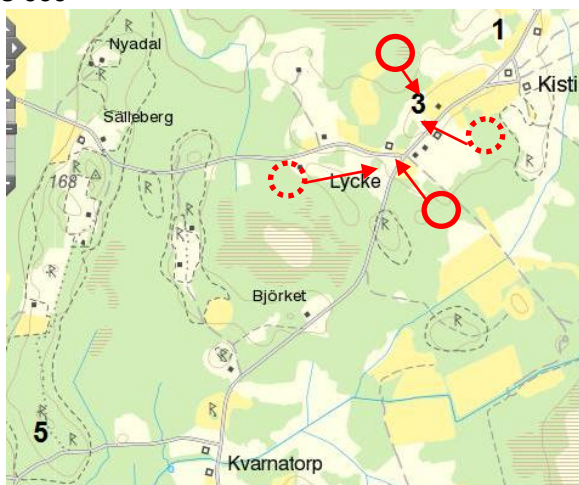
Skala 1:10 000



N 4  
**NV 4**  
 O 6  
 V 8  
**V 7**  
 O 3  
 O 1  
 V 2  
 O 9

IZ  
 IM

Skala 1:25 000



O 1  
 Ok Hus O 3  
 Ok Väg NO Lycke  
 O Björket  
 S Björket  
 Vsk NV Kvarnatorp  
 S 5

H(V)  
 I(Z)

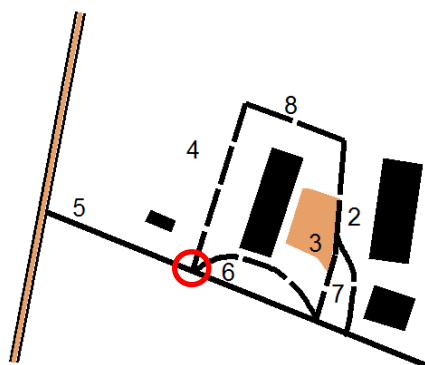
Skala 1:10 000



NO 4  
**Vsk N 4**  
 N LIDNÄS  
 S Såg

IP

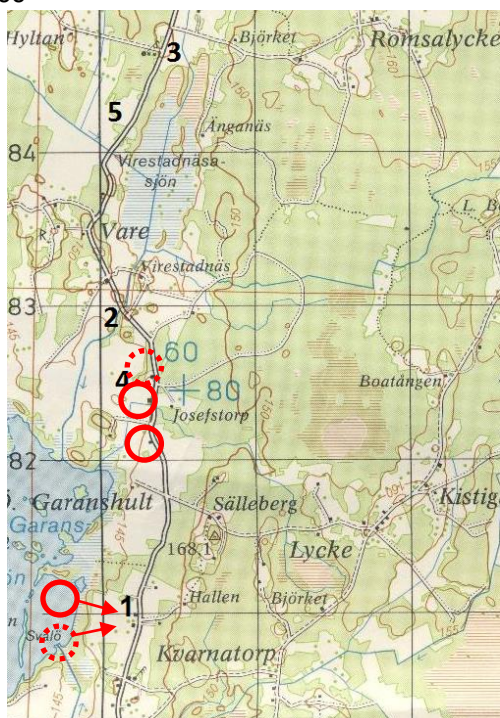
Skala 1:2 000



S 7  
 Ok Väg S 4  
 Vsk V 5

M

Skala 1:50 000

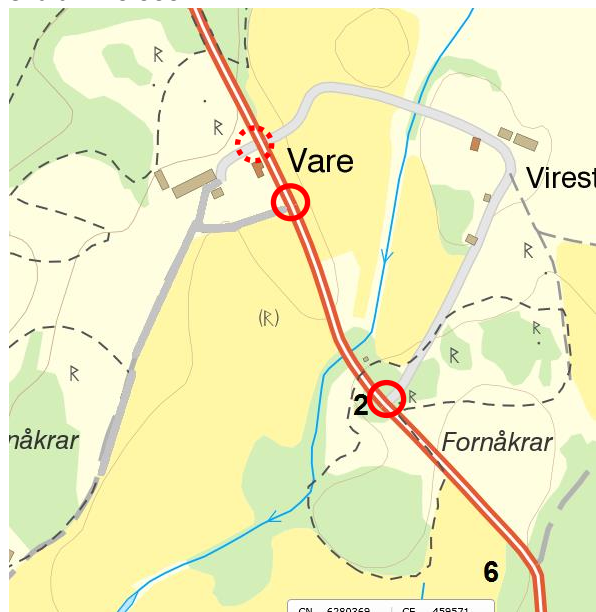


Vsk SV Kvarntorp  
 Ok Mf Hus O 1  
 V 168.1  
 Vsk O Garanshult  
 SV Josefstorp  
 Ok Mf Hus O 4  
 Väg NO 4

(N)A

(O)  
 (S)I

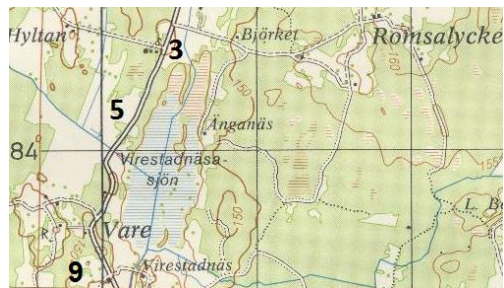
Skala 1:10 000



O 6  
 Ok Väg O 2  
 Ok Mf Väg S Vare  
 Vsk V Vare

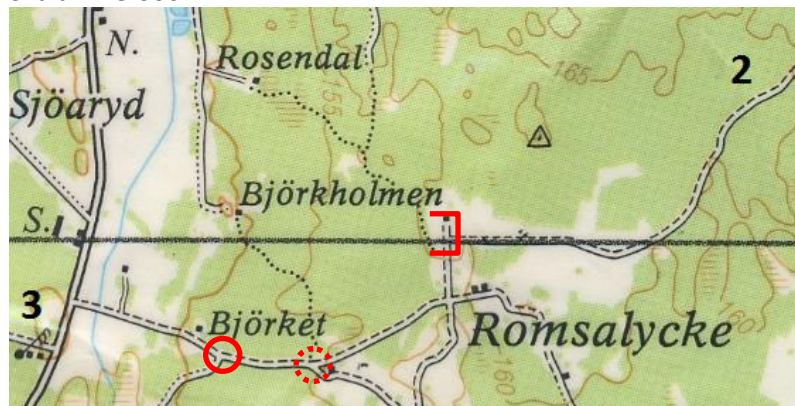
K  
 H  
 (T)

Skala



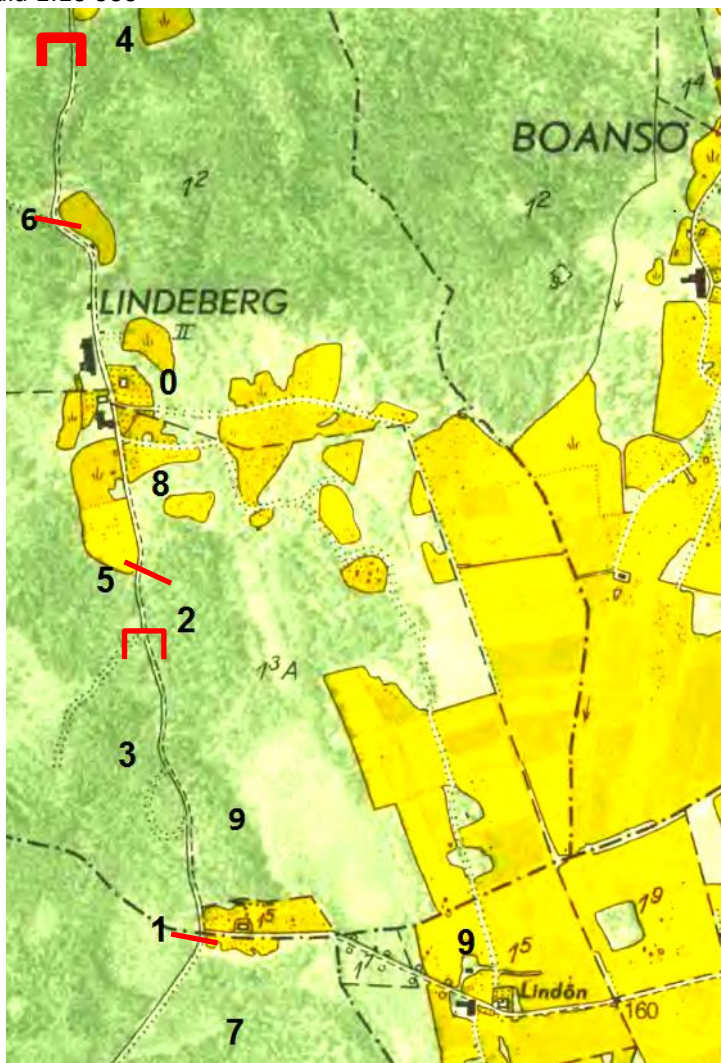
Väg O 9  
 V Vare  
 SV Virestadnäsasjön  
 O 5  
 Vsk N 3

Skala 1:25 000



Ok Vsk O 3  
 Väg S Björket A(O)  
 Vsk NV Romsalycke  
 Vsk SSO Björkholmen V  
 N Romsalycke  
 O Björkholmen  
 O 2 (Kartkant)

Skala 1:10 000



V 7  
 Vsk O 1 II  
 V 9  
 SV 2 N  
 ONO 5 IH  
 V 0  
 V Lindeberg  
 O 6 IN  
 SV 4  
 Tk 8 V 4